



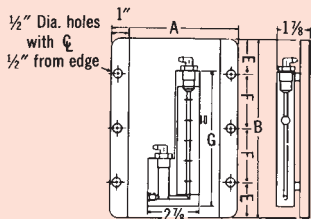
Series  
200  
300

# Durablock® Solid Plastic Stationary Gages

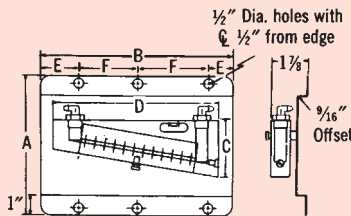
Suitable for Total Pressures Up to 100 psig, Temperatures Up to 150°F.

Accuracy ±2% of Full Scale (1% on Models 215, 244, 246 Only)

310 solid plastic vertical style stationary gage.



200.5 solid plastic inclined style stationary gage.



Model	Dimensions, Inches						
	A	B	C	D	E	F	G
200.5	7	13	3 <sup>1</sup> / <sub>16</sub>	11 <sup>1</sup> / <sub>16</sub>	2	4 <sup>1</sup> / <sub>2</sub>	
201	7	10	3 <sup>1</sup> / <sub>16</sub>	8 <sup>1</sup> / <sub>16</sub>	2	3	
202.5	9	13	5 <sup>1</sup> / <sub>16</sub>	12	2	4 <sup>1</sup> / <sub>2</sub>	
209	9	13	7	11 <sup>1</sup> / <sub>16</sub>	2	4 <sup>1</sup> / <sub>2</sub>	
215	7	10	3 <sup>1</sup> / <sub>16</sub>	9 <sup>1</sup> / <sub>16</sub>	2	3	
244	11	16 <sup>1</sup> / <sub>16</sub>	8 <sup>1</sup> / <sub>16</sub>	15 <sup>1</sup> / <sub>16</sub>	4	8 <sup>1</sup> / <sub>2</sub>	
246	13 <sup>1</sup> / <sub>2</sub>	23	11	22	4	15	
300	7	10			2	3	8 <sup>1</sup> / <sub>16</sub>
306	7	16			4	4	10 <sup>1</sup> / <sub>16</sub>
308	7	16			4	4	13 <sup>1</sup> / <sub>16</sub>
310	7	16			4	4	15 <sup>1</sup> / <sub>16</sub>

Dwyer® solid plastic stationary gages — or draft gages — are offered in inclined and vertical (well-type) styles for highly accurate laboratory or general industrial service, for measurement of low range gas and air pressures, positive, negative or differential. To assure the accuracy required in instruments of this type, all machining of bores and wells is to the highest standards of precision backed by Dwyer's years of experience in the fabrication of acrylic instruments.

## Over-Pressure Safety Traps Prevent Fluid Loss



Exclusive Dwyer® over pressure safety traps assure that over range pressures whether gradual or a sudden surge will not force the liquid out of the gage. Over pressures simply float the cork, force the O-ring over the opening and seal the fluid in the gage. When pressure is reduced, cork drops down releasing the O-ring safety trap opens and the gage continues in operation.

### INCLINED TYPE

Model	Range Inches of Water	Minor Scale Divisions	Scale Length	Weight lbs-oz.
200.5	.10-0-1.0	.01	8 <sup>1</sup> / <sub>16</sub>	3-11
201	.05-0-.50	.01	5 <sup>1</sup> / <sub>16</sub>	2-12
202.5	.20-0-2.0	.01	8 <sup>1</sup> / <sub>16</sub>	4-7
209	.20-0-3.0	.02	8 <sup>1</sup> / <sub>16</sub>	4-11
215	.05-0-.25	.005	6	2-14
244	0-4	.02	13 <sup>1</sup> / <sub>16</sub>	9-11
246	0-6	.02	20	13-14

### VERTICAL OR WELL-TYPE

Model	Range Inches of Water	Minor Scale Divisions	Scale Length	Weight lbs-oz.
300	0- 4	.10	4 <sup>1</sup> / <sub>16</sub>	2-5
306	0- 6	.10	7 <sup>1</sup> / <sub>16</sub>	3-3
308	0- 8	.10	9	3-7
310	0-10	.10	11 <sup>1</sup> / <sub>16</sub>	3-10

NOTE: Model 200.5 replaces Model 200. Model 202.5 replaces model 202.

CALL TO ORDER: U.S. Phone 219 879-8000 • U.K. Phone (+44) (0)1494-461707 • Asia Pacific Phone 61 2 4272-2055